



### **Family Spectator Guidelines**

Here is the new Daily Healthy Screening Link:

<https://c19.tusd.org/>



#### **Daily Health Screening:**

Family members attending the scrimmage must complete a daily health screening upon entry. Also, all players must continue to complete daily health screening as well. Persons without a cellular device will need to complete it on another family member's cellular device. This is applicable to all ages, parents may complete the daily health screening for their children.

#### **Family Spectators:**

Each competing player will be allowed up to 4 family household members to attend our home scrimmage. They will receive a ticket which allows a family of up to 4 persons to enter Zamperini to watch the scrimmage. All family household members must be present together before entering the gates. Families cannot mix and seats cannot be saved for others families. Families may sit together, but must remain socially distanced from other families at all times. Seating will be on a first come, first serve basis. And mask must be worn at all times! Gates will open at 11:15am.

#### **Player Drop off:**

Player drop off will be at Torrance Elementary grass field.

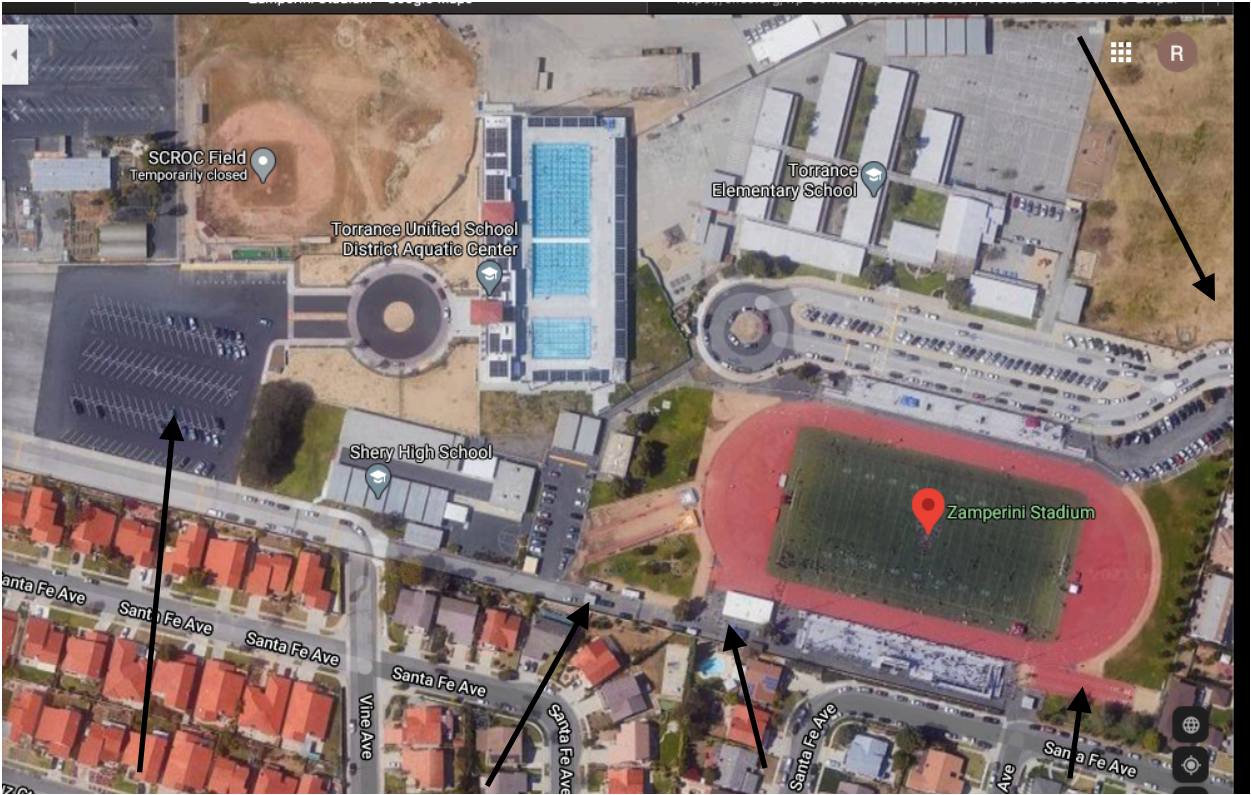
#### **Parking:**

Spectators will park at the SCROC parking lot and will enter & exit through gates near the home concession stands.

#### **Restrooms:**

Restrooms will be open, only two people at a time can enter the restroom for social distancing protocols.

Player drop off



SCROC Parking Lot

Home Entry/Exit

Home Restroom

Volunteer Staging Area