



Southern Section

Academics • Integrity • Athletics

10932 Pine Street, Los Alamitos CA 90720-2428

(562) 493-9500 • Fax: (562) 493-6266

*** INDIVIDUAL WRESTLING ***

TO: CIF-SS ATHLETIC DIRECTORS/WRESTLING COACHES

FROM: GLENN MARTINEZ, ASSISTANT COMMISSIONER

RE: 2018-19 CIF SOUTHERN SECTION INDIVIDUAL
WRESTLING CHAMPIONSHIPS

DATE: JANUARY 22, 2019

DIVISIONAL CHAMPIONSHIPS

On Friday and Saturday, February 8 and 9, 2019 six Divisional Championship meets will be conducted for the purpose of determining the 2018-19 CIF Southern Section Individual Wrestling Champions, as well as Masters Meet qualifiers. Meet information regarding these sites, Meet Managers, league assignments, ticket prices, etc. are listed on the following pages.

CENTRAL DIVISION

(3 ENTRIES PER LEAGUE – 29 TOTAL)

PALM SPRINGS HS

2401 East Baristo Rd., Palm Springs, 92262

Jacob Custer Mgr., (760) 778-0445 (School)

FAX: (760) 778-0474

No.	League	Qualifiers
1.	Del Rio	3
2.	Desert Empire	3
3.	Desert Sky	3
4.	Golden	4
5.	Goldenwest	3
6.	Miramonte	3
7.	Moore	4
8.	Orange	3
9.	Trinity	3

(5 QUALIFY, EACH WEIGHT, TO MASTERS)

SEEDING MEETING: THURSDAY 2-7-19

Rm 207 (Across from Gym) – Palm Springs HS

4:00 pm Seeding Committee Meeting (No Coaches)

7:00 pm sharp Seedings Released to Coaches

COASTAL DIVISION

(3 ENTRIES PER LEAGUE – 25 TOTAL)

AYALA HS

14255 Peyton Dr., Chino Hills, 91709

Grant Brunier, Mgr., (909) 627-3584 (School)

FAX (909) 548-6032

No.	League	Qualifiers
1.	605	2
2.	Coast View	5
3.	Mission Valley	3
4.	Orange Coast	4
5.	Palomares	3
6.	Pioneer	3
7.	River Valley	3
8.	Suburban	2

(5 QUALIFY, EACH WEIGHT, TO MASTERS)

SEEDING MEETING: THURSDAY 2-7-19

, Ayala HS

4:00 pm Seeding Committee Meeting (No Coaches)

7:00 pm sharp Seedings Released to Coaches

SOUTHERN DIVISION

EASTERN DIVISION
(3 ENTRIES PER LEAGUE – 25 TOTAL)

CARTER HS
 2630 N. Linden Avenue, Rialto, 92377
 Kevin Hennessy, Mgr., (909) 854-4100 (School)
 FAX: (909) 574-7313

No.	League	Qualifiers
1.	Citrus Belt	3
2.	Desert Valley	4
3.	Ivy	4
4.	Liberty/Heritage	2
5.	Mojave River	3
6.	Mt. Baldy	3
7.	San Andreas	2
8.	Sunbelt	4

(5 QUALIFY, EACH WEIGHT, TO MASTERS)

SEEDING MEETING: THURSDAY 2-7-19
 Location: Career Center
 4:00 pm Seeding Committee Meeting (No Coaches)
 7:00 pm sharp Seedings Released to Coaches

NORTHERN DIVISION
(3 ENTRIES PER LEAGUE – 24 TOTAL)

CITRUS HILL HS
 18150 Wood Road, Perris, 92570
 TBD, Mgr., (951) 490-0400 (School)
 FAX (951) 490-0405

No.	League	Qualifiers
1.	Bay	3
2.	Big VIII	3
3.	Citrus Coast	2
4.	Coastal Canyon	3
5.	Freelance	1
6.	Marmonte	2
7.	Mountain Pass	3
8.	Sunkist	3
9.	Sunset	4

(5 QUALIFY, EACH WEIGHT, TO MASTERS)

SEEDING MEETING: THURSDAY 2-7-19
 Front Admin Conference Rm, Citrus Hill HS
 4:00 pm Seeding Committee Meeting (No Coaches)
 7:00 pm sharp Seedings Released to Coaches

INLAND DIVISION
(3 ENTRIES PER LEAGUE – 27 TOTAL)

TEMECULA VALLEY HS
 31555 Rancho Vista Rd., Temecula, 92592
 Arnold Alpert, Mgr., (951) 695-7300 (School)

No.	League	Qualifiers
1.	Almont	3
2.	Arrowhead	2
3.	Baseline	3
4.	Channel	3
5.	Mountain Valley	4
6.	Pacific Coast	3
7.	Pacific View	3
8.	Southwestern	3
9.	Valle Vista	3

(5 QUALIFY, EACH WEIGHT, TO MASTERS)

SEEDING MEETING: THURSDAY 2-7-19
 Building 2, Room 204, Temecula Valley HS
 4:00 pm Seeding Committee Meeting (No Coaches)
 7:00 pm sharp Seedings Released to Coaches

SOUTHERN DIVISION
(3 ENTRIES PER LEAGUE – 28 TOTAL)

BREA OLINDA HS
 789 Wildcat Way, Brea, 92821
 Ferg McTeggart, Mrg. (714)990-7850
 FAX (714) 990-7547

No.	League	Qualifiers
1.	Century	4
2.	Cross Valley	3
3.	Empire	3
4.	Freeway	3
5.	Hacienda	3
6.	Mission	3
7.	Montview	3
8.	Rio Hondo	3
9.	San Gabriel Valley	3

(5 QUALIFY, EACH WEIGHT, TO MASTERS)

SEEDING MEETING: THURSDAY 2-7-19
 Location: Cafeteria, Brea Olinda HS
 4:00 pm Seeding Committee Meeting (No Coaches)
 7:00 pm sharp Seedings Released to Coaches

SOUTHERN DIVISION



MUSCLES. SPEED. AGILITY. SMARTS.

OUR VEHICLES. OUR ATHLETES.



THE SOUTHERN CALIFORNIA FORD DEALERS
PROUDLY SUPPORT SO CAL HIGH SCHOOL ATHLETICS.



SOUTHERN DIVISION

DATES AND TIMES

FRIDAY, FEBRUARY 8, 2019 (All times are approximate)

Coaches and Wrestlers Registration (Mandatory)		8:00 a.m.
Weigh-in and grooming (All wrestlers must be present)		9:00 a.m.
Coaches' Meeting	10:30 a.m. -	11:00 a.m.
First Round (6 Mats)	11:00 a.m. -	2:30 p.m.
Championship Second Round/ Cons. 1 st Round (6 Mats)	2:30 p.m. -	6:00 p.m.
Consolation Second Round (6 Mats)	6:00 p.m. -	7:30 p.m.
Championship Quarterfinals/ Cons. 3 rd Round (6 Mats)	7:30 p.m. -	9:30 p.m.

Please Note: By NFHS Rule 4-5, there will be **no** weigh-in at the conclusion of Friday's competition. All weigh-ins must take place on the **day of competition**, a maximum of 2 hours before the competition begins. This is the same weigh-in procedure that will be in place at the Masters Meet and State Championships.

SATURDAY, FEBRUARY 9, 2019 (All times are approximate)

Weigh-in and grooming (All wrestlers must be present)		9:00 a.m.
Consolation Fourth Round (6 Mats)	11:00 a.m. -	12:00 p.m.
Championship Semifinals/ Cons. 5 th Round (6 Mats)	12:00 p.m. -	1:30 p.m.
Consolation Semifinals (4 Mats)	1:30 p.m. -	2:15 p.m.
Parade of Champions (Consolation 7th, 8th, 5th, 6th, 3rd and 4th)	2:15 p.m. -	2:25 p.m.
CHAMPIONSHIP FINALS (4Mats)	2:30 p.m. -	5:00 p.m.

With the permission of the CIFSS Office the Meet Manager can move up scheduled events

Please Note (New This Year):

- 1) The format for the Evening Session will be to wrestle the Seventh Place, Fifth Place, Third Place and First Place matches on 4 mats at the same time.
- 2) The Finals will be wrestled in order from 106, 113, 120, etc. There will not be a random draw prior to the Finals to determine the order.
- 3) This year we will wrestle a seventh and eighth place finisher for seeding purposes, next year. Seventh and eighth place finishers will not receive medals and cannot be used as alternates. They will be recognized at the awards ceremony.

All matches will be 2-2-2 minute periods, except for consolation matches, which will be 1-2-2. Since all times are approximate, it is the responsibility of the athlete to be at the match.

DRAW – All 6 Divisions will be Double Elimination Format

Per existing rule, 4-team leagues will be guaranteed 2 entries, 5-6 team leagues will be guaranteed 3 entries and leagues with 7-8 teams or more will be guaranteed 4 entries and 9 or more teams will be guaranteed 5 entries into the C.I.F. Southern Section Individual Wrestling Championships. **The brackets for each division will reflect the total number of guaranteed entries of the leagues in that division. There will no longer be a random draw for additional alternates to add wrestlers to those brackets.** If a league loses an entry prior to the start of the tournament, that league can replace that entry with an alternate from that league first. If no Alternate from that league is present, then the alternates from other leagues can be drawn in. Wrestlers that have a first round bye, and win their second round match, will receive two (2) advancement points for round one in addition to their second round advancement points. Page Four

WEIGH-IN AND GROOM CHECK – OFFICIALS WILL BE PRESENT AT ALL WEIGH-INS

Each divisional meet will conduct weigh-ins and grooming check at 9:00 a.m. on Friday, February 16, and on Saturday, February 17, at 9:00 a.m. **All wrestlers must be present at the weigh-in area at the beginning of weigh-ins.** All weigh-ins will begin with the 106 lb. class and progress in order up to the 285 lb. class. When all wrestlers for a weight class have had an opportunity to weigh-in and the next class is called, that weight class is closed. Each coach is expected to be present to identify his wrestlers during weigh-in to prevent misunderstandings and/or mistakes. Grooming will be checked prior to weigh-in. Each wrestler is to have his hand stamped after making weight/grooming. The 2-pound weight allowance will be in effect.

ENTRY BLANKS

The manager of each league-wrestling tournament has been furnished with official entry blanks. It is his responsibility to complete and fax one copy each to the appropriate divisional meet manager, and to the CIF-SS office, **BY 11:00 P.M., SUNDAY, FEBRUARY 3, 2019.** The league meet manager, for reference, should retain a third copy.

ENTRY FEE

No entry fee will be charged to member schools.

ELIGIBILITY LIST

Once you have completed the Team Roster information, the Eligibility Form requirement will be satisfied. **Please make sure this is completed prior to the first playoff competition.**

SEEDINGS AND AUTHORITY

WRESTLING SEEDING WILL AGAIN BE DONE BY COMMITTEE ONLY

Seeding will be done by a seeding committee made up of League Representatives and members of the CIF Wrestling Advisory Committee. A Short Tournament organizational meeting will be held for coaches at 7:00 PM to discuss tournament procedures and announce the seeded wrestlers. **The decisions of the seeding committee will be final.**

The seeding committee will meet at 4:00 pm. Thursday the week of the individual divisional meet. The Tournament director will be responsible for selecting an individual to run the committee seeding meeting. The Tournament Director and the Seeding Director will meet with the CIF-SS administrator in charge of wrestling the Tuesday prior to the seeding committee meeting to discuss the proper procedures for running the seeding meeting.

The seeding committee will be made up of:

- Tournament Director
- Seeding Meeting Director
- One representative from each league
- Any member of the CIFSS Advisory Committee

The seeding committee will have the responsibility of seeding each weight class based on information shared on paper from each league representative. Wrestling Advisory Committee member will assist in this process

The seeding committee will follow the stated CIFSS seeding criteria.

All coaches are responsible to have in the hands of their league representatives the pertinent information for their individual wrestlers immediately after the league finals to include prior results of who has beaten whom, State placement, CIFSS placement, tournament results and total records. It is the responsibility of that league representative to see that his league wrestlers are appropriately seeded.

At 7:00 p.m., there will be a general meeting of “all coaches” where tournament information will be shared along with the seeds. Any seeding “anomalies” that need to be corrected will be done at that time by the Seeding Director.

ALTERNATES

The manager of each league finals meet will provide for the selection of alternates from his league for representation at the divisional finals meet. No alternates will wrestle unless their names are listed (league finals managers only are responsible for alternates). Each alternate should be notified of the time schedule for the divisional finals meet, and plan to be present, in case he is called upon to wrestle. Should an opening occur after the league entries are submitted, that opening will be filled from the alternate list submitted by that league.

FORFEIT RULE

If a wrestler forfeits, or fails to show for a championship or third-place match in any of the divisional meets, the winner will be given his choice of accepting either first or second place, or third or fourth place. This decision must be made at the time of the forfeit and so indicated to the Divisional Meet Manager. This procedure will also be used in the Masters Meet.

COACHES

CIF-SS rules state that during tournament competition, a maximum of two (2) team coaches will be permitted to sit in the restricted coach's area. Facilities permitting, coaches shall be seated at least 10 feet from the official's table and the edge of the mat. The coach must have a coach's badge to be in the mat area or to enter through the participant's entrance. Mat maids, other participants, spectators, or other coaches violating this rule may be asked to leave the gym.

Page Six

PROTESTS

By action of the CIF Council at its March 1983 meeting, protests of playoff contests involving National Federation Rules will not be entertained following the conclusion of the contest. Coaches may direct questions to the officials, as they pertain to a possible misapplication of the rules, in accordance with the National Federation Rules governing that sport. No protest may be carried forth once the contestants have left the mat area. Coaches are encouraged to carry a National Federation Wrestling Rule Book with them for all playoff contests. Schools will still have the opportunity to protest a contest in accordance with Southern Section Rules 1110 and 1111, as they pertain to the use of ineligible players, or violations of any CIF-SS rule, in connection with the contest.

OFFICIALS

Officials for all Divisional Championships, and the Masters Meet, will be assigned from the Commissioner's office.

AWARDS

The following awards will be presented at each championship tournament on Saturday, February 9, 2019.

1. Individuals: Engraved CIF-SS medals for all wrestlers placing first, second, third, fourth, fifth, and sixth in each weight division.
2. MVP for lower weight levels 106-138 and upper weight levels 145 to heavyweight.
3. Participation Certificates: The template for the Participation Certificates can be downloaded from our website. www.cifsshome.org Go to Forms from the yellow tool bar. Click on the page icon to the right of the Sports Participation Form to download the document.

SCHOOL ADMISSION - PRELIMS AND FINALS

Each team will be permitted a total of 4 passes for coaches and other designated personnel, this does not include participants. School personnel over the maximum of 4 **must purchase tickets**; this includes managers, statisticians, cheerleaders, bus drivers, etc.

ADMISSION PRICES

1. **CIF SOUTHERN SECTION WRESTLING CHAMPIONSHIPS**

FRIDAY, FEBRUARY 8, 2019

\$10.00 Adults

\$5.00 High School Students (with I.D.)

\$5.00 Children (3 - 13)

ADMISSION PRICES

*SATURDAY, FEBRUARY 9, 2019

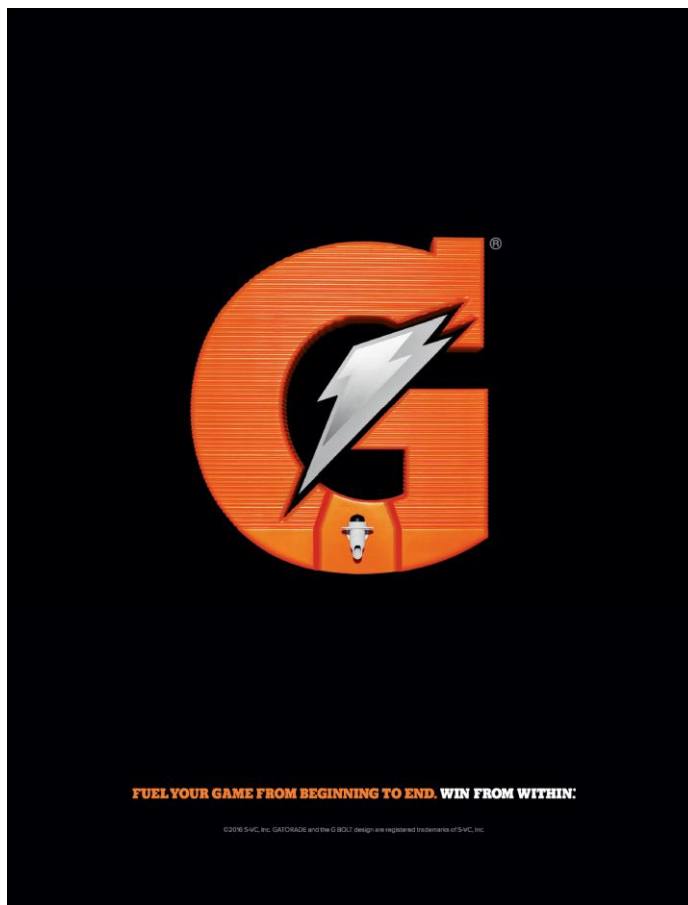
\$12.00 Adults

\$5.00 High School Students (with I.D.)

\$5.00 Children (3 - 13)

CIF Courtesy Cards and Press Credentials will be honored at this event.

PARKING Parking lots are located at school sites.



SOUTHERN DIVISION

WRESTLING PLAYOFF FORMS DUE JANUARY 29, 2018

All Playoff Information must be submitted at

www.CIFSSHome.org

VARSITY TEAM INFORMATION (ROSTER)

Attention Athletic Directors/Coaches: It is very important that you enter your entire Varsity roster into CIFSSHome
Log in @ www.cifsshome.org (If you do not have a log in & password as a coach, check with your Athletic Director).

Once you are logged in:

-On the left panel, Click on the “Teams” tab, select your sport

-Here are the instructions for using the sample file.

- Download the sample file **and** delete the “contents only”. Copy and paste or type your roster information into the file as the contents and save the file to your computer. You can only upload an excel file (xls) that is the exact same format as the sample file. Columns for information not required for your sport may be left blank, but the HEADER INFORMATION MUST REMAIN EXACTLY AS THE SAMPLE.

ROSTER REQUIREMENTS:

Student’s Full Name, Birthdate, Year, Eligibility, Height and Weight

VARSITY COACHES

Attention Athletic Directors/Coaches: It is very important that you enter your Varsity coaches (Head & Assistants) into CIFSSHome (www.cifsshome.org)

Log in @ www.cifsshome.org (If you do not have a log in & password as a coach, check with your Athletic Director).

Once you are logged in:

-Click on the “Teams” tab on the left navigation bar. Click on the corresponding varsity wrestling team .

-Click on “Add/Edit Coaches”, select the information to add both your HEAD & ASSISTANT coaches

VARSITY TEAM PHOTO DUE

Attention Athletic Directors/Coaches: It is very important that your Varsity Team Photo is uploaded to CIFSSHome (www.cifsshome.org)

Log in @ www.cifsshome.org (If you do not have a log in & password as a coach, check with your Athletic Director).

-On the left panel, click **Teams**” tab on the left navigation bar. Click on the corresponding varsity wrestling team.

- Under Team Picture, click [Add/Edit picture](#), click Browse, find your file and click “Upload Picture” – Team Photo can be no larger than 672 pixels x 480 pixels (7”x5”) and 300 dpi

SCHEDULES & SCORES Complete your schedule in CIFSSHome prior to your season as well as update scores following each contest

Attention Athletic Directors/Coaches: It is very important that you enter your entire season schedule into CIFSSHome (www.cifsshome.org) as well as update the scores immediately following your contests.

Log in @ www.cifsshome.org (If you do not have a log in & password as a coach, check with your Athletic Director).

Once you are logged in:

-On the left panel, click on “Teams”, select “WRESTLING”

-To **Add a game**, click “Add Game” at the top right and fill out all of the required fields which are marked by a red (*) to complete your schedule.

-To **Submit your score**, click on the “Teams”, select “WRESTLING” Scroll through your schedule and click on the green “Post Result” button.

-Make sure that your overall and team records are correct on your team page.

AT LARGE APPLICATION -

Attention Athletic Directors/ Coaches: Please follow the instructions below to enter your school as an At Large Entry. The At Large Application is to be submitted by your school no later than due date in your Playoff Bulletin.

Log in @ www.cifsshome.org (If you do not have a log in & password as a coach, check with your Athletic Director).

Once you are logged in:

-On the left panel, click on At Large Petition

-Select “YOUR SPORT” then click “Add”

Please be sure that your Schedule is updated in CIFSSHome as this is where the information for the At Large Petition will be created.

Check out the Help Videos under the Help tab on the bottom left, “Be CIF Prepared!”

SOUTHERN DIVISION

LOCATION OF SEEDING MEETINGS – THURSDAY, FEBRUARY 7, 2019

Central Division –Palm Springs HS, 2401 E. Baristo Rd., Palm Springs, 92262

Jacob Custer, Meet Manager - (760) 778-0445 School,

Time: 4:00 p.m. - SHARP!

Place: Room 207 (Across from Gym) Palm Springs HS

Directions: I-10 to Gene Autry/S. to Vista Chino/R to Farrell/L to Baristo/R. to school

Coastal Division – Ayala HS, 14255 Peyton Dr., Chino Hills, 91709

Grant Brunier, Meet Manager – School: (909) 627-3584 Fax: (909) 548-6032

Time: 4:00 p.m. - SHARP!

Place:TBD, Ayala HS

Directions: 71 Fwy to Peyton Dr. S/1/2 mile to school on L

Eastern Division – Carter HS, 2630 N. Linden Avenue, Rialto, 92377

Kevin Hennessy, Meet Manager – School: (909) 854-4100 (School) Fax: (909) 574-7313

Time: 4:00 p.m. – SHARP!

Place: Career Center

Directions: 210 Fwy to Ayala/ N to Casmalia/L to Linden/N to school.

Inland Division – Temecula Valley HS, 31555 Rancho Vista Rd., Temecula 92592

Arnold Alpert, Meet Manager – School: (951) 695-7300

Time: 4:00 p.m. - SHARP!

Place: Building 2, Room 204, Temecula Valley HS

Directions: (15) Freeway S./L/ on Rancho Calif Rd./R. on Ynez/L. on Rancho Vista Rd.

Northern Division – Citrus Hill HS, 18150 Wood Road, Perris, 92570

TBD, Meet Manager – (951) 845-3171, School , (951) 490-0405 Fax:

Time: 4:00 p.m. - SHARP!

Place: Front Admin Conference Room, Citrus Hill HS

Directions: 215 Fwy to Van Buren Blvd./W to Wood Rd/S to school

Southern Division –Brea Olinda HS, 789 Wildcat Way, Brea, 92821

Ferg McTeggart, Meet Manager - Fax: 714 990-7547

Time: 4:00 p.m. - SHARP!

Place: Cafeteria, - Brea Olinda HS

Directions: (575) Fwy N, to Lambert/E. to Wildcat Way/N to School

SEEDING PROCEDURES

These criteria, developed and supported by the C.I.F. Southern Section Wrestling Coaches Advisory Committee, are to be followed in order. When conflicts arise, they are to be resolved by a vote of the League Representatives. The Seeding Director is responsible for all final seeding decisions.

1. Criteria for seeding
 - a. Most recent head-to-head competition
 - b. A returning State placer
 - c. A returning State qualifier (placed in the C.I.F.-SS Masters Meet)
 - d. A returning C.I.F.-SS place winner
 - e. A wrestler with the best overall “representative” record against quality opposition.

Note: Coaches need to be able to provide verification of their wrestler’s results

Voting Procedure

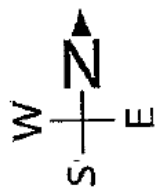
When there is considerable disagreement, argument or otherwise, the League Representatives should vote. This vote would follow a two-minute presentation by the wrestler’s coach only of facts concerning the desired wrestler to be seeded. Only representatives may vote on a one (1) vote per league basis.

2. The Seeding Director will make an arbitrary seeding as a starting point for seeding.
3. A short “orderly” discussion will follow and League Representative, if necessary, will quickly vote upon each seed.
4. The remaining positions will be by draw. Where possible, leagues will be separated. No more than 8 wrestlers per weight will be seeded.
5. Alternates will weigh-in along with qualifiers. The first alternate from each league will take the place of a qualifier in his league who does not make weight or is a no show. If a qualifier is overweight, injured, etc., and there is no alternate present from that league, there will be a random draw of other league alternates to fill that spot.
6. If a seeded wrestler does not show up, then each seeded wrestler will move up, and the bracket will remain the same, unless there is inter-league conflict, at which time the non-seeded wrestlers will be drawn again.
7. The Seeding Director has the power to make final seeding decisions.

MAP - FIRST LEVEL

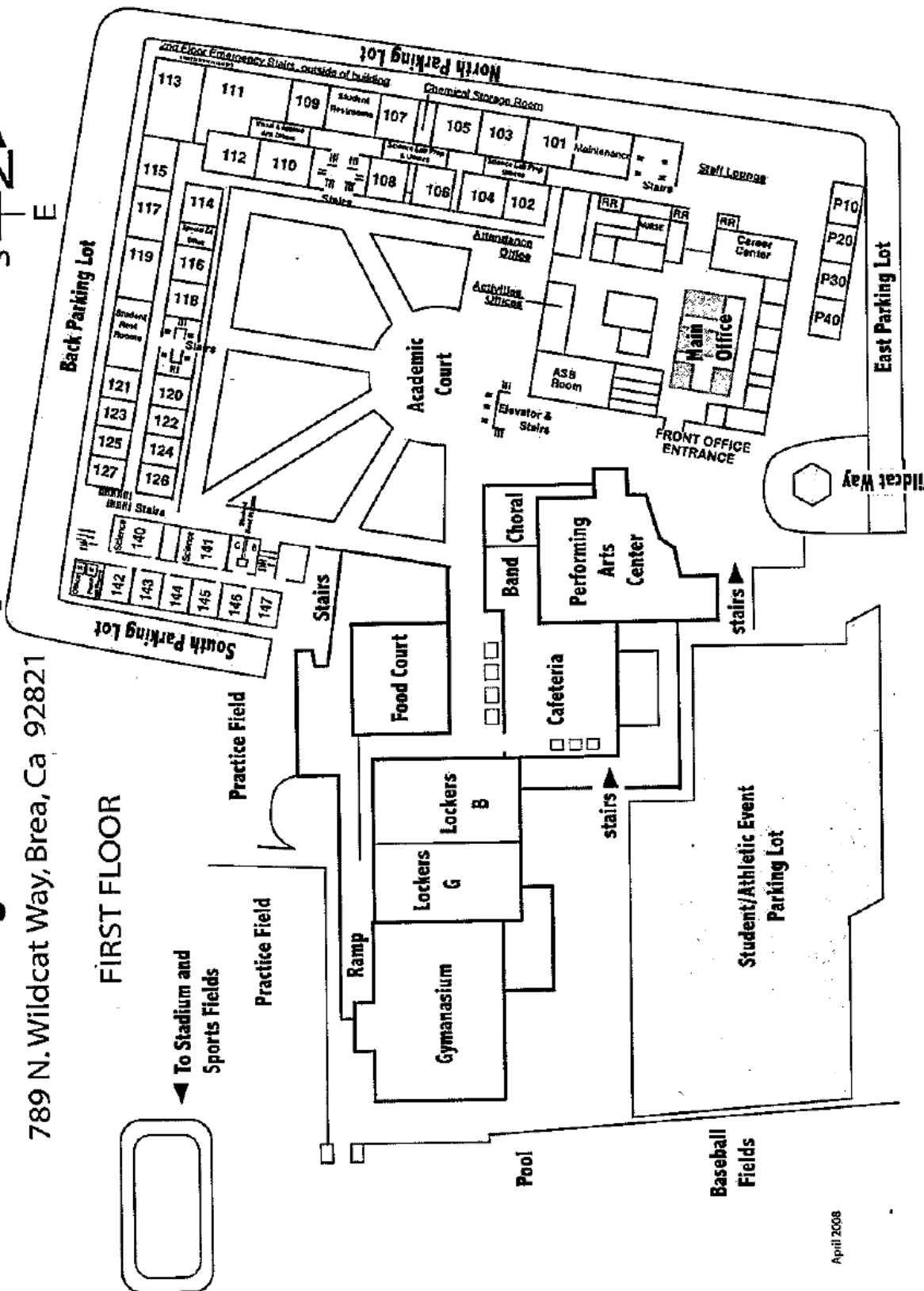
Brea Olinda High School Campus

789 N. Wildcat Way, Brea, Ca 92821



FIRST FLOOR

← To Stadium and Sports Fields



April 2008

SOUTHERN DIVISION

HOTEL

Embassy Suites

Our special discounted group rates begin with a minimum of 10 guestrooms and each 2-room suite offers complimentary breakfast for every registered guest.

We are also proud to introduce newly designed guestroom suites, and we continue to offer all of the value-added amenities that are included with the Embassy Suites' Hotels brand; such as:

- Complimentary full cooked-to-order breakfast
- Daily complimentary evening reception from 5:30 – 7:30 p.m
- Complimentary 9-passenger shuttle service within a 5-mile radius
- No resort fees and complimentary covered parking
 - Refrigerators, microwaves and coffee makers in every Suite
 - On-site laundry facility
 - Non-smoking building

|Group Sales r

Embassy Suites Brea - North Orange County

900 E. Birch St., Brea CA 92821

Direct: [714-510-2980](tel:714-510-2980)

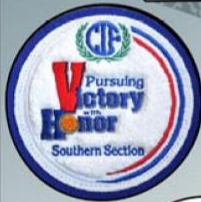
www.embassysuitesbrea.com

SOUTHERN DIVISION



JL CUSTOM JACKETS

OFFICIAL LICENSED PATCH
AND JACKET MANUFACTURER



You can design and purchase
your own custom patches
on our website.

VARSITY JACKET SPECIAL

\$245.00

WOOL BODY WITH LEATHER
SLEEVES AND POCKETS

VARSITY LETTER SEWN
ON FRONT

MAKE AND SEW ON UP TO
3 SPORT EMBLEMS

EMBROIDER FIRST NAME,
SCHOOL NAME, MASCOT
NAME AND 1 SPORT
ONTO THE FRONT

CREATE AND SEW ON A
CUSTOM GRADUATING YEAR



STANDARD GIRLS PACKAGE:

\$ 230.00

ALL WOOL BODY AND SLEEVES
WITH A WOOL HOOD

To Order Call:

(951) 867-3200

or visit us on the web:

www.jlcustomjackets.com

7161 Old 215 Frontage Road, Moreno Valley, CA

Fax (951) 867-3277



• PRICES ARE SUBJECT TO CHANGE WITHOUT NOTICE •

SOUTHERN DIVISION



THE HOME OF



STREAM ON





INTERESTED IN ONLINE TICKETING?

IS YOUR SCHOOL A
GO FAN
SCHOOL?

SOUTHERN DIVISION