



WELCOME TO

playermaker

**TRAIN SMART.
PLAY SMART.**





ACCEPTED BY FIFA INNOVATION

IN THE NEWS



The FA and Playermaker teamed up to perform an extensive research project exploring the demands of the game. The project aims to better inform coaching staff, multi-disciplinary practitioners and athletes, who as a result will be able to make educated decisions about training priorities and managing injuries, and to better understand training load and match intensity



“We are thrilled that professional female footballers will now be able to use Playermaker technology in both game and training environments.” - **Guy Aharon, CEO and Co-Founder of Playermaker**



BEYOND THE HEADLINES



Arsène Wenger joins Playermaker as an investor and operating partner.

"Playermaker's technology is essential for modern football coaches - regardless the level. How we coach players has developed but what hasn't changed is the need for coaches and managers to utilize cutting edge innovations to get ahead"



Liverpool FC Rising Star, Harvey Elliott joins Playermaker as brand ambassador.

"I'm interested in data, I feel like it will help me a lot in my career and take me to a new level."



WE TRACK

playermaker



INVOLVEMENT



SPEED



TECHNICAL BALANCE



PLAYING TEMPO



VOLUME



SPORTS TECHNOLOGY
AWARDS®
WINNER

**FOR BEST SPORTS EQUIPMENT
OR WEARABLE TECHNOLOGY**

IMPROVE THE PLAYER

playermaker

TECHNICAL ANALYSIS

- Number of TOUCHES
- Leg Usage %
- # of POSSESSIONS
- PLAYING TEMPO
- 1 touch | Short | Long %
- Total Time on the ball
- Avg. Time on the ball
- And much more!



playermaker
△△△△△
406

IMPROVE THE TEAM

PHYSICAL ANALYSIS

- DISTANCE COVERED
- # of Sprints
- TOP SPEED
- WORK RATE
- ACCELERATIONS/DECELERATIONS
- HIGH SPEED RUNNING
- And much more!

playermaker





PHYSICAL ANALYSIS

- DISTANCE COVERED
- # of Sprints
- TOP SPEED
- WORK RATE
- ACCELERATIONS
DECELERATIONS
- HIGH SPEED RUNNING
- And much more!



TECHNICAL ANALYSIS

- Number of TOUCHES
- Leg Usage %
- # of POSSESSIONS
- PLAYING TEMPO
- 1 touch | Short | Long %
- Total Time on the ball
- Avg. Time on the ball
- And much more!



THE TECHNOLOGY

VALIDATED BY TOP UNIVERSITIES
AROUND THE WORLD.

REAL TIME LEARNING ALGORITHM.

6 AXIS MOTION SENSOR.

BUILT IN GYROSCOPE &
ACCELEROMETER.

SAMPLES MOVEMENT EVENTS AT
1000 times/sec.



THE HARDWARE

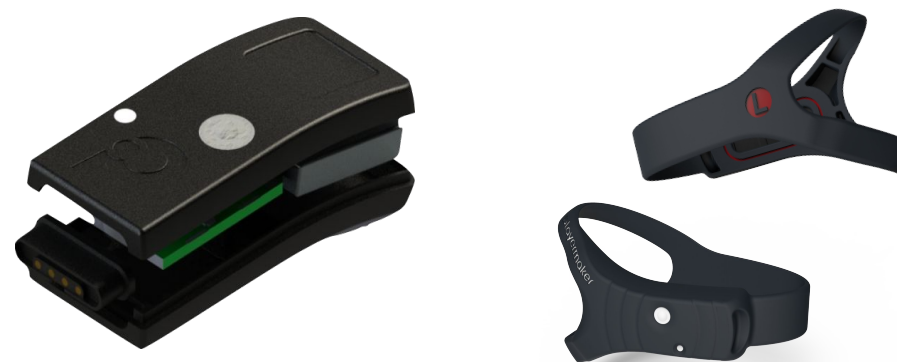
VALIDATED BY TOP UNIVERSITIES
AROUND THE WORLD.

REAL TIME LEARNING ALGORITHM.

6 AXIS MOTION SENSOR.

BUILT IN GYROSCOPE &
ACCELEROMETER.

SAMPLES MOVEMENT EVENTS AT
1000 times/sec.



THE SIMPLE PROCESS

CAPTURE



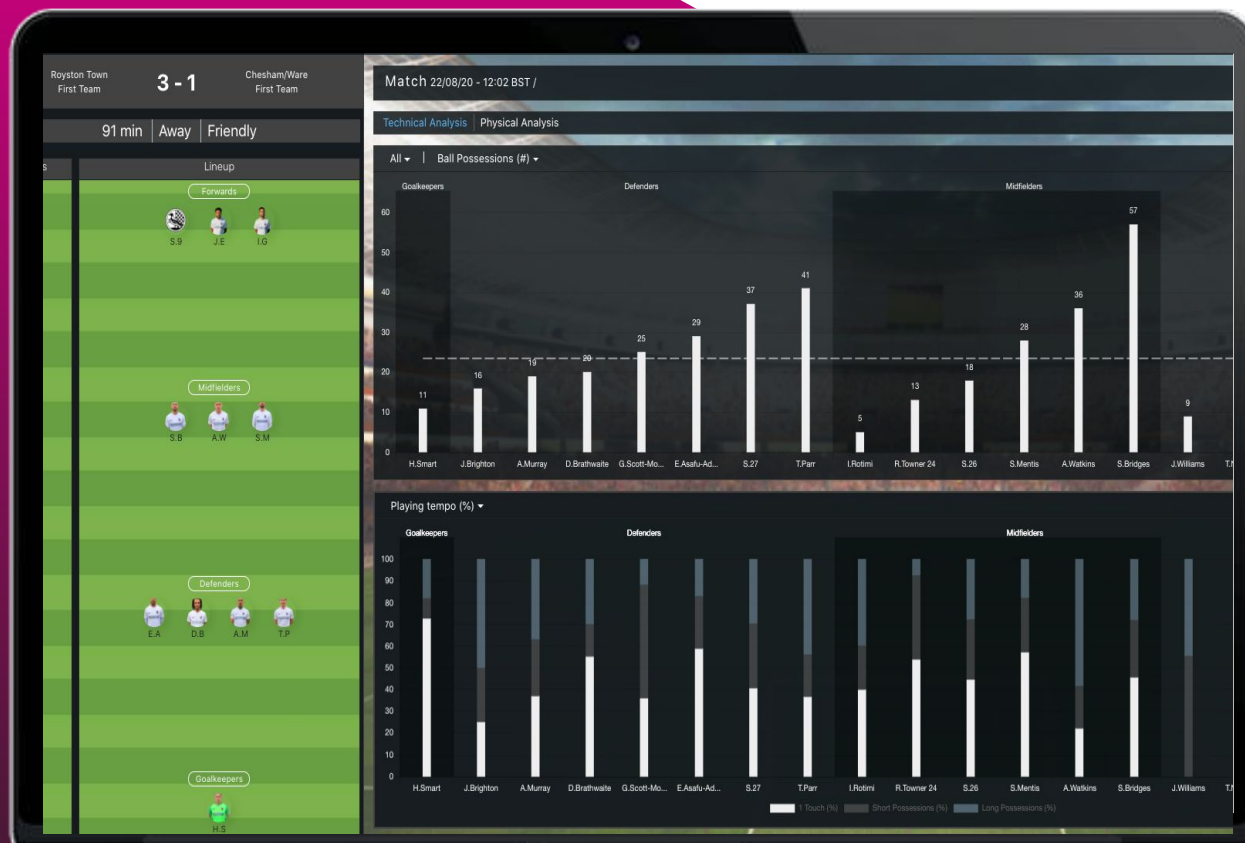
SYNC



REVIEW



THE COACHING DASHBOARD



This is the goal.

Upgrade to the team solution anytime with **10+** units purchased.

No Commitment, Added Benefits - Gain additional insights with team data. Learn more about the individual player AND the team. Increase player AND club exposure.

CONTACT DETAILS

TO DISCUSS YOUR
DEAL FURTHER



CESAR LOPEZ
Director of
SALES



cesar.lopez@playermaker.com



+1 786.523.3348